

## Grasso RC 611 (1x) - RC 411 (1x)

### Specifications

|                          |  |
|--------------------------|--|
| Brand                    | Grasso                                 |
| Type                     | RC 611 (1x) - RC 411 (1x)              |
| Refrigerant              | Freon                                  |
| kW at 0°C/+40°C          | 980,6                                  |
| kW at -5°C/+40°C         | 804,6                                  |
| kW at -10°C/+40°C        | 651,8                                  |
| kW at -20°C/+40°C        | 405,1                                  |
| kW at -30°C/+40°C        | 224,5                                  |
| On steel base frame      | ✓                                      |
| Pressure safety switches | ✓                                      |
| Hp/Lp/Op                 |  |
| Pressure gauges          | ✓                                      |
| Hp/Lp/Op                 |  |
| Liquid receiver          | ✓                                      |
| Liquid receiver ltr.     | 2531 liter                             |
| Oil separator            | ✓                                      |
| Oil level system AC&R    | ✓                                      |
| Liquid line filter drier | ✓                                      |
| Sight Glass              | ✓                                      |
| m3 / h                   | 1330 m <sup>3</sup> /h                 |
| Remarks                  | Total capacity of 335,6 kW at -33/-5°C |
| Package / Rack           | ✓                                      |
| Sizes                    | 4600x2500x3500 mm (LxWxH)              |
| Stock                    | 1                                      |



### Description

#### Used Grasso RC 611 (1x) - RC 411 (1x)

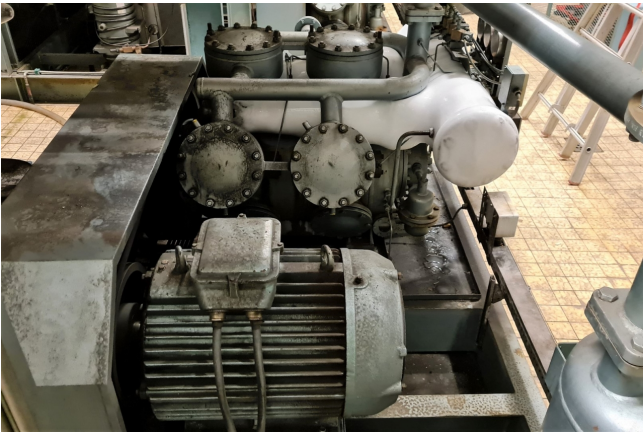
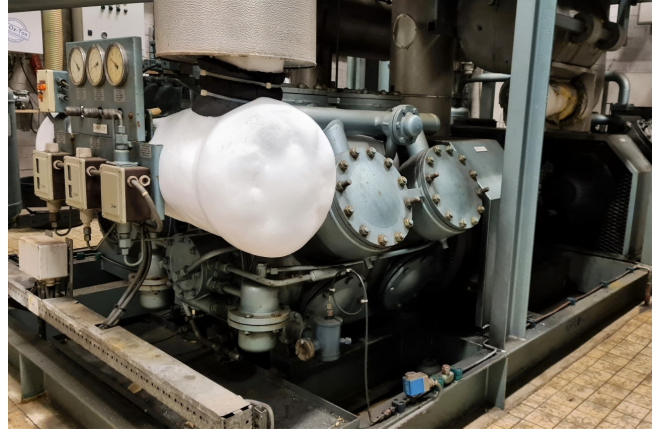
Used Grasso low pressure unit. Complete with the following components: Grasso RC 611 reciprocating compressor with a total capacity of 200,6 kW at -33/-5°C. The compressor is V-belt driven by Metz XF250M04-12 electric motor 50 Hz - 55 kW - 1475 RPM. Grasso RC 411 reciprocating compressor with a total capacity of 135,0 kW at -33/-5°C. The compressor is V-belt driven by Metz XF280MK04 electric motor 50 Hz - 90 kW and 1480 RPM. Each compressor set has a 43 ltr oil separator, oil level system and pressure switches and gauges. Grasso low pressure liquid separator 2581 ltr with a total capacity of 350 kW at -35/-5°C and 2x Hermetic CAM 2/3 centrifugal pumps.

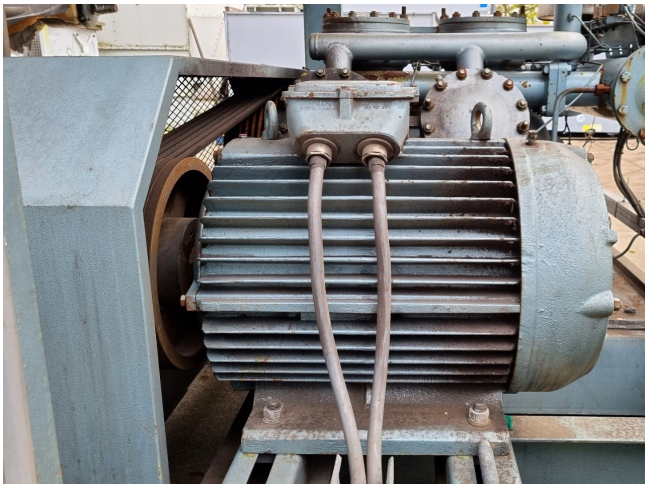
\*Why choose for HOSBV? Were not only the largest used refrigeration specialist

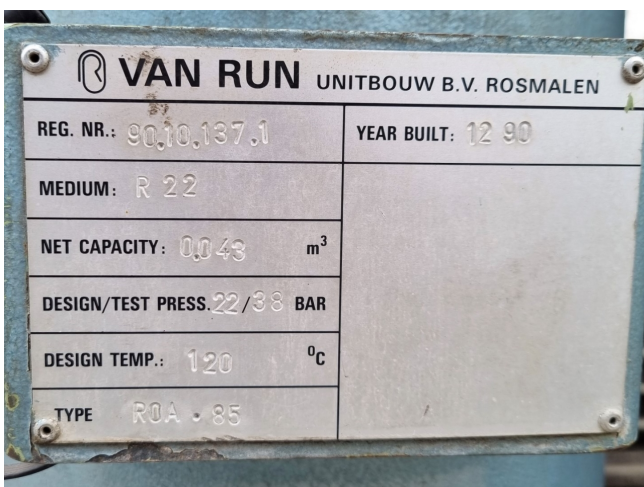


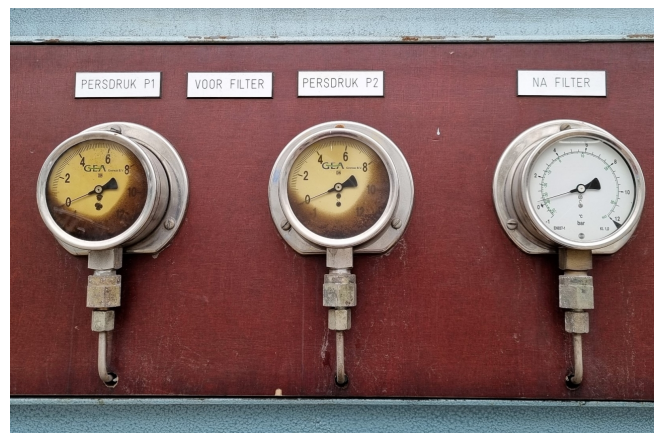
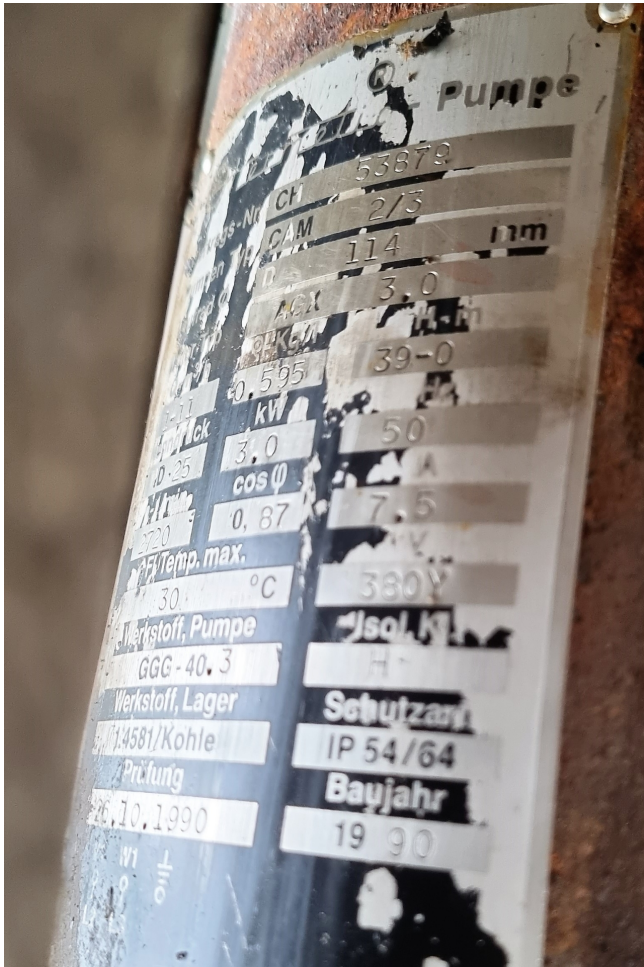
in Europe, but also, we deliver all equipment including an extensive test, warranty and industrial cleaning.

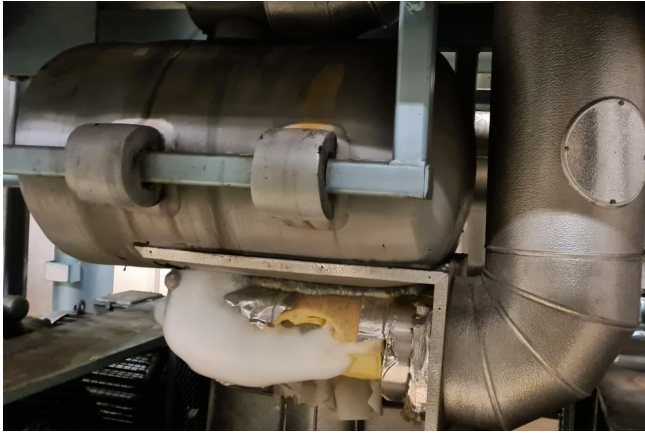
\*Optional we can also perform a new paint job and arrange the logistics.











| Compressor  | nr 1        | nr 2        |
|---|-------------|-------------|
| Compressornummer of codering volgens tekening             | K11         | k21         |
| Hogedruk/ lagedruk/ eentraps/ tweetraps                   | Lagedruk    | Lagedruk    |
| Tusseninspuiting direct/ met warmtewisselaar              |             |             |
| Economiser aanwezig open/ gesloten                        |             |             |
| Temperatuur/druk economiser                               |             |             |
| Fabriek   | Grasso      | Grasso      |
| Type  | RC 611      | RC 411      |
| Koelvermogen kW   | 194,5       | 129,2       |
| Aandrijfvermogen kW                                       | 40,4        | 27,5        |
| Zuiger/schroef  | Zuiger      | Zuiger      |
| Open/ semi-hermetisch                                     | Open        | Open        |
| Aandrijving direct/ V-snaar                               | V-snaar     | V-snaar     |
| Toerental compressor omw/min                              | 860         | 860         |
| Merk elektromotor   | Metz        | Metz        |
| Type elektromotor   | XF250M04-12 | XF280MK04   |
| Vermogen elektromotor                                     | 55          | 90          |
| Toerental elektromotor omw/min                            | 1475        | 1480        |
| IP klasse elektromotor                                    | 54          | 54          |
| Capaciteitsregeling (afschakelen, schuif, toeren)         | Afschakelen | Afschakelen |
| Verdampingtemperatuur setpoint °c                         | -32 / -33,6 | -32 / -33,6 |
| Type oliekoeling (thermo syphon, koudemiddel, water/geen) |             |             |